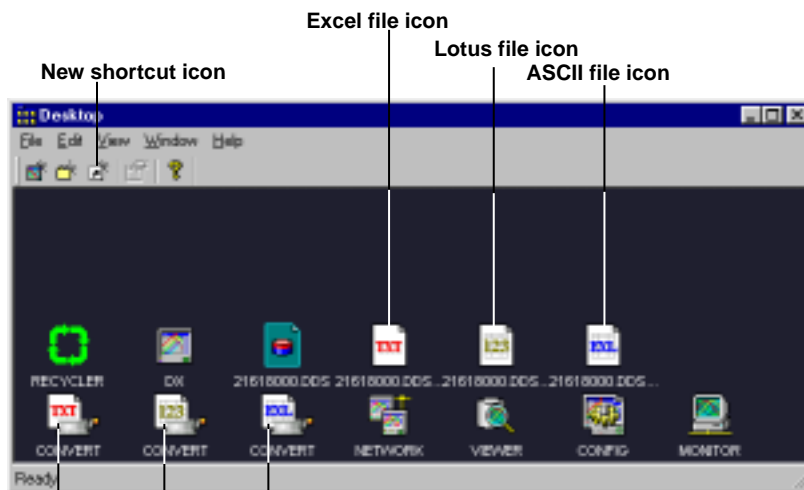


In accordance with the upgrade of the software (R2.01), please make the following alterations to your user's manual.

DAQ Desktop (Chapter 2) Desktop Appearance



Convert-to-Excel icon

Convert-to-ASCII/Convert-to-Lotus/Convert-to-Excel Icon (/XF1 Auto File Conversion Function)

You can convert the data by dropping the icons of convertible files, folder containing those files, or shortcuts to the icon of the target data format.

New Shortcut Icon

Click the New Shortcut icon to display the Create shortcut dialog box. Click the folder for which a shortcut is to be created on the desktop and click OK. A shortcut is created.



You can also open the Create shortcut dialog box by choosing New Shortcut from the File menu.

You cannot create shortcuts for the following folders.

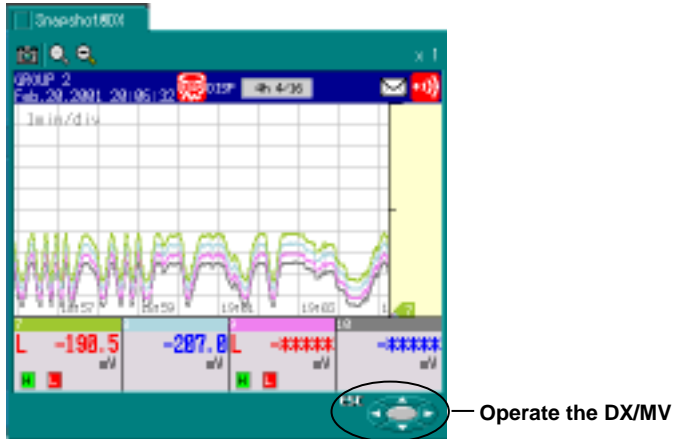
- Root directory such as drive C
- DAQStation and ~recycler folders
- Folders in the ~DX___ and MV___ folders
- Folders that are displayed on the desktop
- Folders for which a shortcut already exists

Data File Icon

You can display three types of file icons, ASCII, Lotus, and Excel.

Snap Shot

Double-click the snap shot icon of the DX/MV folder or drop it on the desktop to display the snapshot folder.



You can also double-click the image data file (.png) of the screen that was created by the DX/MV to display the snapshot folder, but you cannot operate the DX/MV.

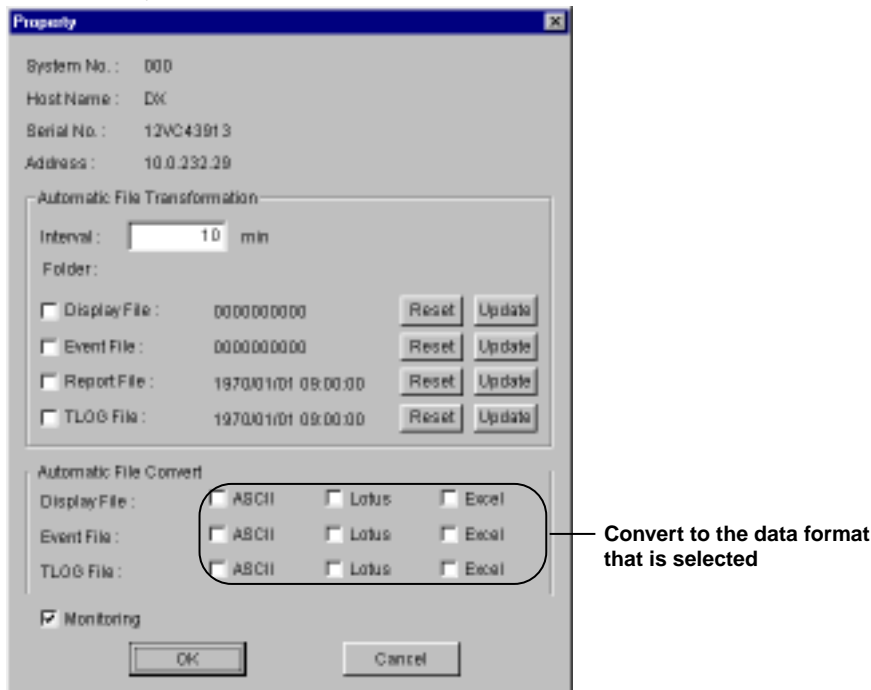
Showing and Hiding Icons

If you drop the network icon, viewer icon, hardware configurator icon, monitor icon, convert-to-ASCII icon, convert-to-Lotus icon, or convert-to-Excel icon to the recycle box, it is no longer displayed on the desktop.

To display the icon again, choose the icon from the menu bar.

Automatically Creating Conversion Files from the Automatically Transferred Files (Page 2-10)

If the optional auto file conversion function (/XF1) is installed, you can automatically create conversion files from the automatically transferred files.



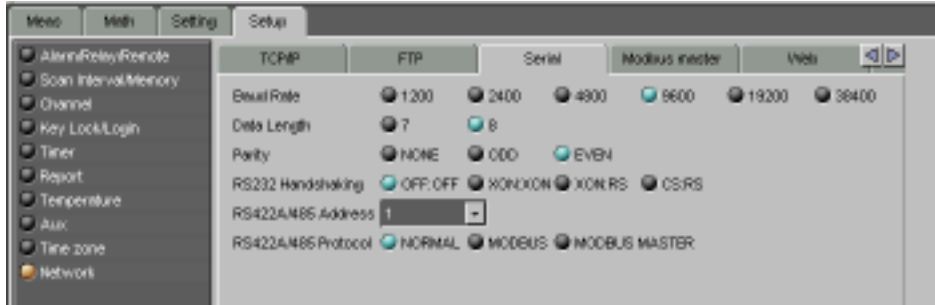
Hardware Configurator (Chapter 5)

The following functions have been added to style number 4 or later styles of the DX/MV.

Modbus Protocol

Setting Serial Communications

1. Open the Network dialog box under Setup.
2. Click the Serial tab.



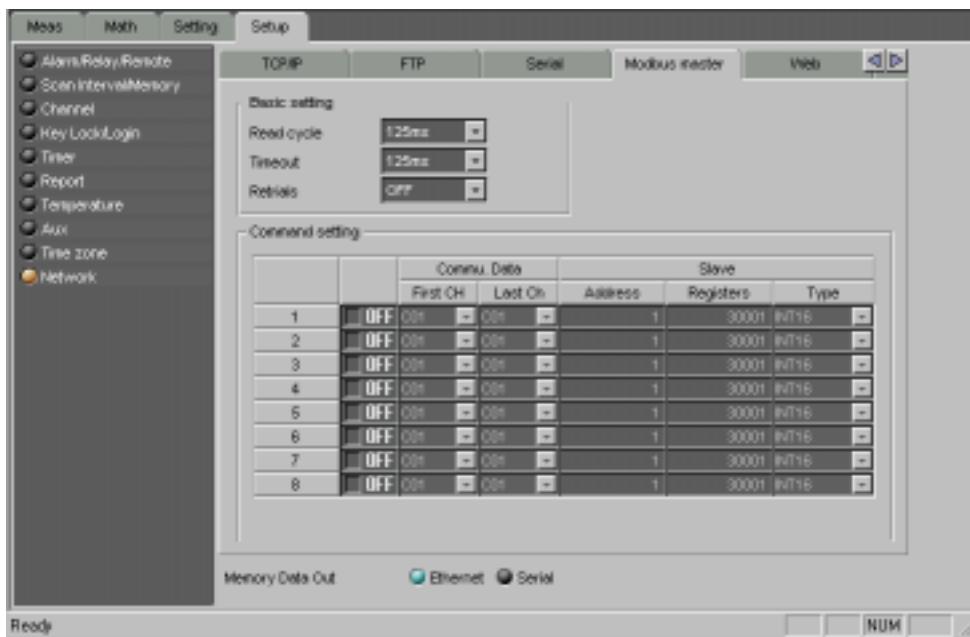
3. Set the protocol to MODBUS or MODBUS MASTER.

MODBUS: Modbus slave protocol

MODBUS MASTER: Modbus master protocol

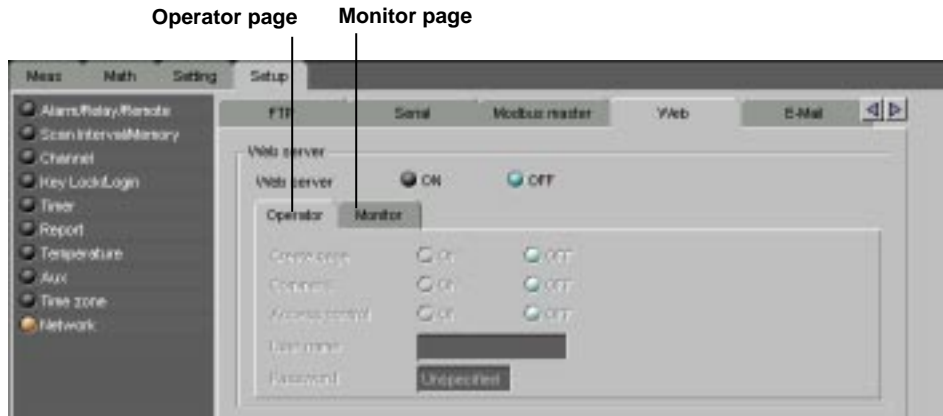
Setting the Modbus Master

1. Open the Network dialog box under Setup.
2. Click the Modbus Master tab.



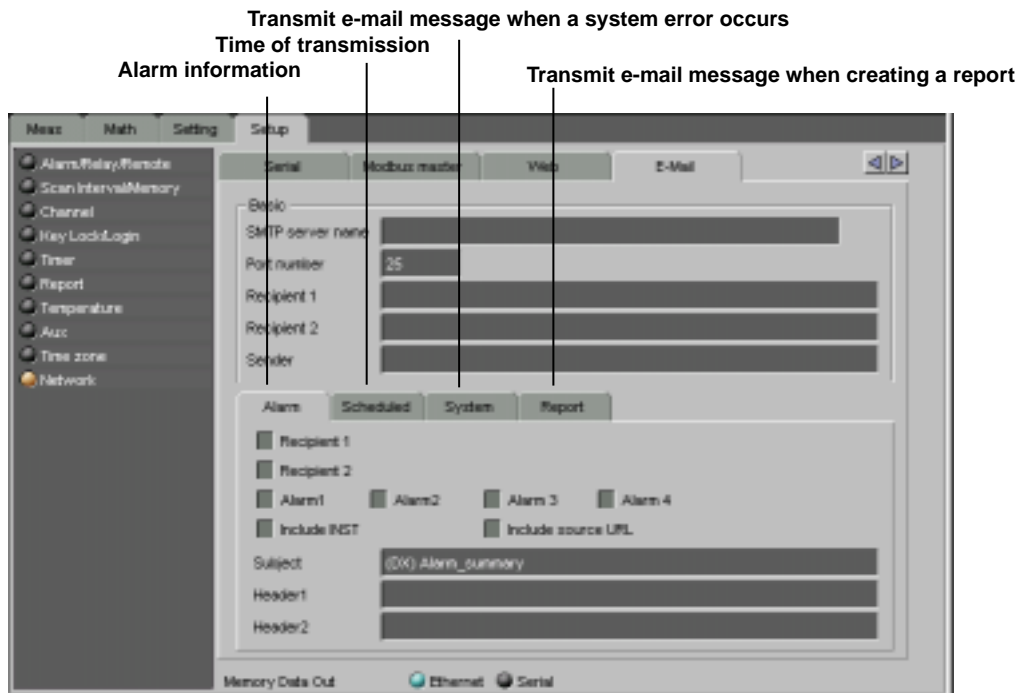
Web Server Function

1. Open the Network dialog box under Setup.
2. Click the Web tab.



E-mail Transmission Function

1. Open the Network dialog box under Setup.
2. Click the E-Mail tab.



Trend Graph Direction

"Horizontal2" has been added to the Trend Graph Direction under "Setting" on page 5-12.

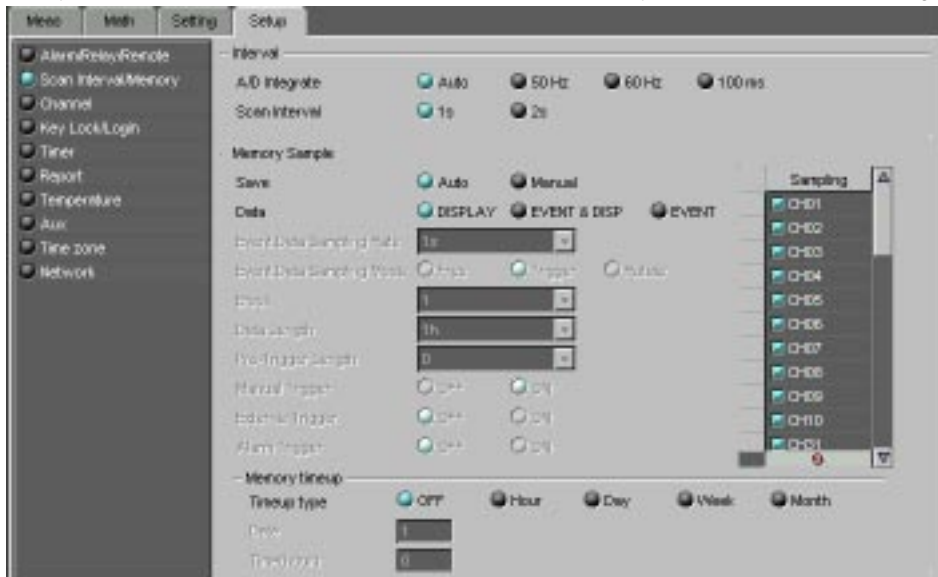
Scale Digit

"Scale digit" has been added to "Setting" on page 5-12.



Memory Timeup

"Memory timeup" has been added under "Scan Interval/Memory" in the "Setup" tab on page 5-17.



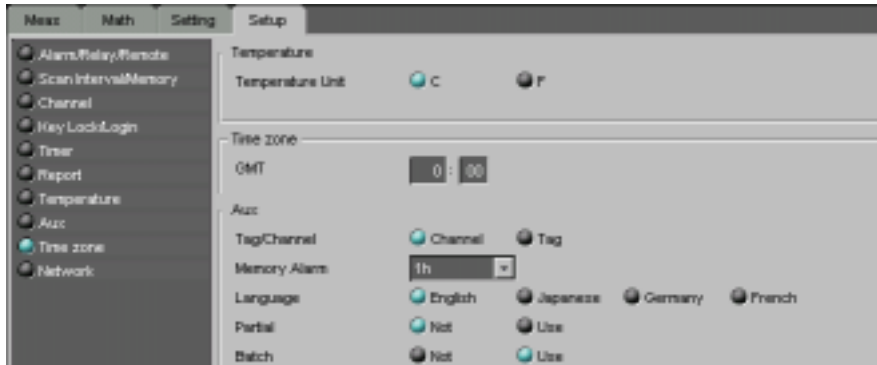
Hour+Day

"Hour+Day" has been added under "Report" in the "Setup" tab on page 5-21.



Time Zone

"Time zone" has been added to the "Setup" tab.



Data Viewer (Chapter 4)

The following files can also be displayed.

- Report file: .dhr (hourly), .ddr (daily), .dwr (weekly), and .dmr (monthly)
- Manual sample file : .dmn

Displaying Report Files

Vertical display

		Status	AVE	MIN	MAX
CH01	[mV]		0.3	99999	-999
CH02	[mV]		-14.3	99999	-999
CH03	[mV]		-32.2	99999	-999
CH04	[mV]		-51.0	99999	-999
CH05	[mV]		-67.5	99999	-999
CH06	[mV]		-84.7	99999	-999
CH07	[mV]		-91.1	99999	-999

Horizontal display

		CH01 [mV]	CH02 [mV]	CH03 [mV]	CH04 [mV]
2001/02/16 18:00	Status				
	AVE	0.3	-14.3	-32.2	-51.0
	MIN	99999	99999	99999	99999
	MAX	-99999	-99999	-99999	-99999
SUM		7.888000E+02	-4.465000E+04	-1.006304E+05	-1.591344E+05

Status

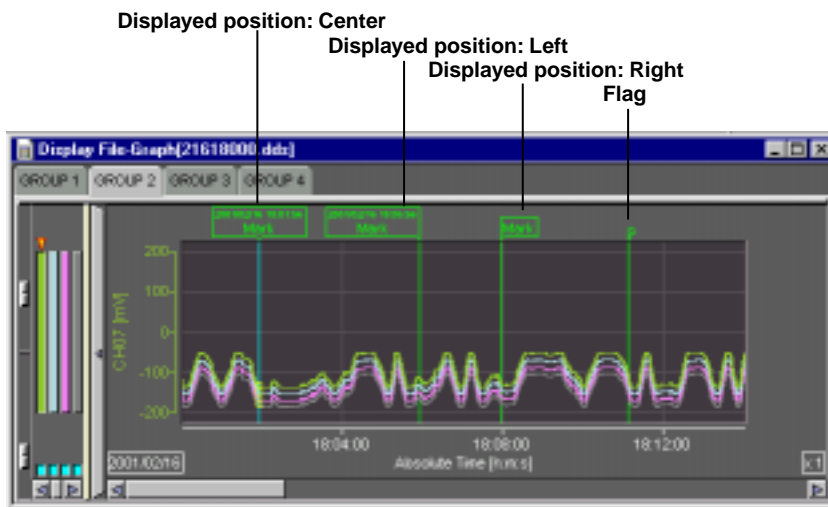
The following icons are displayed in Status.

- : A measurement error or computation error occurred during the period over which the report was created.
- : An over range or computation overflow occurred during the period over which the report was created.
- : A power failure occurred during the period over which the report was created.
- : The time was changed during the period over which the report was created.

“Adding Arbitrary Marks” on Page 4-8

When adding an arbitrary mark, you can set the displayed position of the mark and select whether the time is displayed by the mark.

The displayed time is either the absolute time or relative time depending on the time axis setting.



If you left-click the mark while pressing the “Ctrl” key, the mark is displayed in front.

If you left-click the mark while pressing the “Shift” key, the mark is displayed in the back.

Section 4.5, “Linking Files and Saving the Link Settings File” on Page 4-15

When linking and displaying files, make sure that the number of data points after linking does not exceed 1048576. In addition, if there is a period over which data does not exist such as when a power failure occurs, data is counted as if the data is acquired at the given scan interval even during that period. The scan interval and the maximum period for linking files are indicated below.

Interval	Period
1/8 s	1.51 days
1 s	12.1 days
10 s	3.91 months
60 s	1.99 years
10 min	19.9 years

For example, if data is acquired continuously at 1-s scan interval and there is a period of power failure over 12.1 days, the data before and after the power failure cannot be linked and displayed.